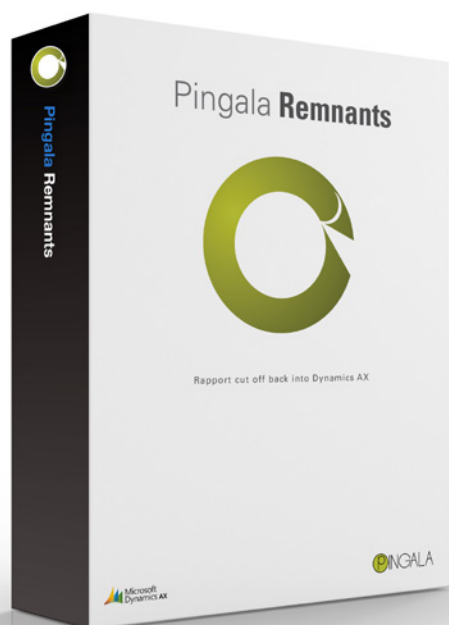


PINGALA REMNANTS



Registration of cut off from metal plate cutting:

Size recognition, quantities of plates, costing.

- ✓ Report cut off back into Dynamics AX as an daily procedure
- ✓ Keep track of plate remnants – sizes and placement in inventory
- ✓ Makes it easy to find pieces of plates for other productions
- ✓ Get correct cost allocation on each production and a more accurate project profit picture
- ✓ Reduce cost of material by using the plate remnants

In a manufacturing process where raw material in the shape of plates are used, the needed subject will be cut out from a larger piece of plate. This will raise questions about how to handle the remaining part in the ERP-system.

Challenges

Possible challenges in handling remnants:

- Remnants are not registered and you loose track of them.
- The cost value of a production suffers from the consumption of a large plate though the subject actually used is only a part of that plate.
- Remnants are not selected properly or just selected randomly from stock to keep things going in the production.
- Remnants are not the same item-id in the system to keep full sheets and remnants apart but the price for doing that is losing the relation between the full sheet and the remnant.
- Remnants are sold off as scrap in too huge quantities.
- The price of metal is high and you are looking for a cost reduction.

Contact information

Kent Højlund
khoejlund@pingala.eu
www.pingala.eu

Vibeholms Allé 20, st.th.
2605 Brøndby
Denmark

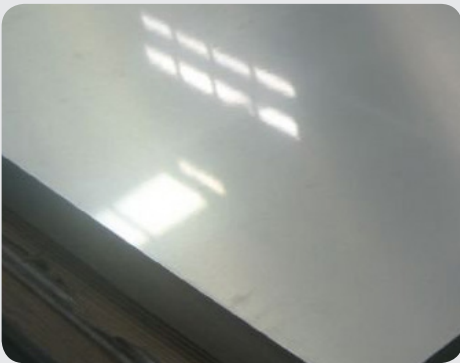




Why waste material when cutting metal plates?

makes it easy to keep track of the plate remnants and to make the right project cost allocation.

Reduce cost of plate material with the use of **PINGALA REMNANTS**



Client experience

Niro A/S is a global manufacturer of large freeze drying plants for the dairy sector.

PINGALA REMNANTS has helped Niro register and track in Dynamics AX the many metal residues they cut off when they build their machines and facilities.

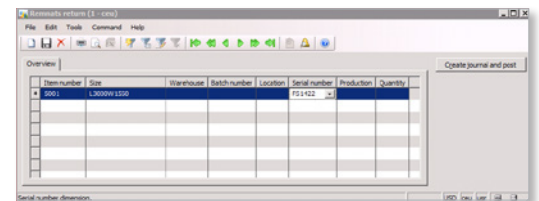
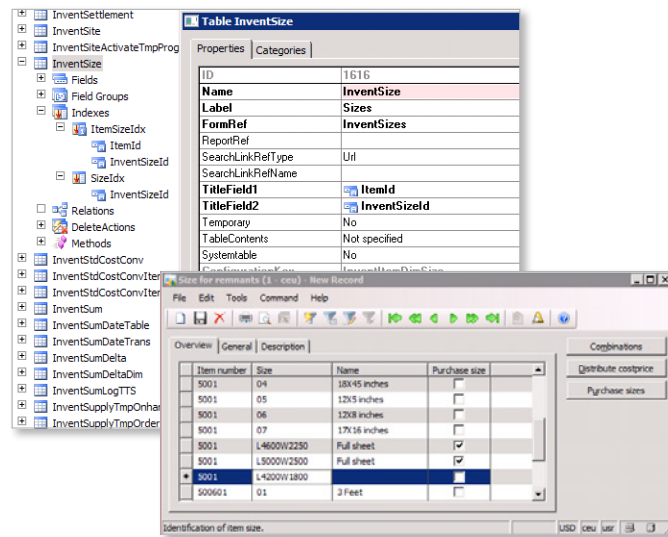
Time to find remnants on inventory shelves has been reduced and also the quantity of metal plates have been reduced due to the system.

Finally Niro is now able to allocate the material cost of each project correctly allowing for a more accurate profit calculation.

Requirements

The solution should obey these functional requirements:

- Easily order full sheet plates when purchasing.
- Full sheets and remnants are handled on stock as integer quantity units. You cannot have 2.8 quantity of a full sheet. The 0.8 must be a quantity of 1 of another size.
- On-hand quantity per size. It must be possible to know the location of the sheet or remnant that you are looking for. The stock area might be large or if it is outside the lots might be covered with snow.
- Length and width are natural attributes for the sheet or remnant and should be easily recognized in the size-id.



- One size-id relates to another expressed as a ratio between the area measures of the two. It is the basis for setting the cost price for a remnant.
- A full sheet plate of a given quality and thickness is represented by one item-id. Various size full sheets and various size remnants are equal candidates as raw material.

Contact information

Kent Højlund
khoejlund@pingala.eu
www.pingala.eu

Vibeholms Allé 20, st.th.
2605 Brøndby
Denmark